



# FOLDING ELECTRONIC STEPS & UNICO 6 IN 1



Entrance Steps

## NEW ELECTRONIC FOLDING STEPS BEHIND SKIRT FIT

Very clever disappearing motion allows the step, installed behind the side skirt, to have the fibreglass skirt fixed to the mechanism. On folding away the step brings the section of skirt to line up and hides the step installation. High quality construction for reliable operation. Galvanized and painted steel structure, Gear motor on ball bearings, Quick manual release system for emergency, Multifunction electronic control unit for total control of all step functions. Steps are supplied with motor on left as pictured.



ES1057040



ES1057040



## NEW DOUBLE STEPS

Electronic double step with disappearing motion, Anti-slip, soft polyurethane footboard without sharp corners, Opening and closing by impulse, Automatic closing when starting the vehicle's engine, Gear motor protection system in case of excessive stress, Sensor for "open step" warning light. Footboard width: 400 mm. • Weight: kg. 15,000. Energy input: 3 A.

**ES1057040** DOUBLE SOFT STEP 400MM WIDE FOOT BOARD

Electronic double step with disappearing motion in 2 widths, Anti-slip anodized aluminium footboard, Opening and closing by impulse, Automatic closing when starting the vehicle's engine, Gear motor protection system in case of excessive stress, Sensor for "open step" warning light. Footboard width: 480 mm. = weight kg. 16,900, 527 mm. = weight kg. 17,400. Energy input: 3 A.

**ES1057448** DOUBLE STEP 480MM WIDE FOOT BOARD

**ES1057453** DOUBLE STEP 527MM WIDE FOOT BOARD

Electronic double step with disappearing motion, Anti-slip anodized aluminium footboard, Opening and closing by impulse, Automatic closing when starting the vehicle's engine, Gear motor protection system in case of excessive stress, Sensor for "open step" warning light. Footboard width: 440 mm. = weight kg. 15,600. Energy input: 3 A.

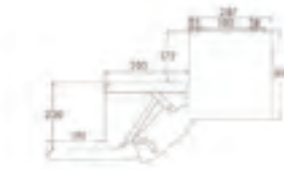
**ES1057744** DOUBLE STEP 440MM WIDE FOOT BOARD



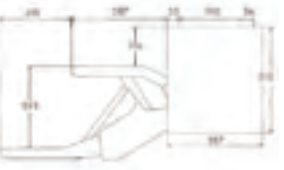
ES1057448 - ES1057453 - ES1057744



ES1057448 - ES1057453



ES1057744



ES1057653



ES1057653

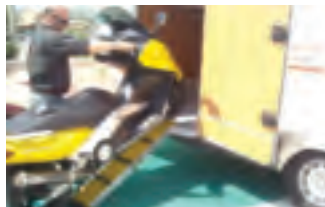


## NEW TRIPLE STEP

For the larger vehicle a well engineered Triple Electronic step completely disappearing under the vehicle, Anti-slip anodized aluminium footboard, Footboard width: 527 mm.

Weight: kg. 29,000, Energy input: 5 A

**ES1057653** TRIPLE STEP 527MM WIDE FOOT BOARD



## UNIKO 6 in 1 IS NOW 7 in 1 NEW RAMP PROFILES

Now you can use your Uniko to load your scooter, bike or quad into the garage with the set of ramp profiles. Profiles quickly attach to Uniko to make a rigid anti slip ramp for loading your garage.

**LVUNIKORAMP** Pair of ramp profiles & locking pins for Uniko.

## NEW UNIKO 6 in 1 - 6 FUNCTIONS ONE UNIQUE PRODUCT

Is it a chock? Is it a ramp? Is it a track? Yes UNIKO is all of those and more

The UNIKO 6 in 1 is designed and manufactured to the highest standards available. These levels are tested to hold 3500kg per wheel. This is the best quality multi function levelling system money can buy.

UNIKO is a unique and innovative design for caravans and motorhomes for when effective levelling is a must.

Important for the fridge and ensuring your shower drains away you need to level up when you park.

When laid out flat in a long track it can be used to provide grip to get you off those wet muddy pitches quickly and easily with superior traction. If you have two UNIKO they can be joined together with the locking handles in the kit.

Uniko 6 in 1 is made of special hi-quality and heavy duty plastics (Nylon) which are non-toxic, 100% recyclable, UV stabilised and easy to clean. Very solid construction with carrying capacity of 3500kg.



Size: folded up: (L) 36,5 x (W) 25 x (H) 17 cm  
fully open : (L) 145 x (W) 25 cm Weight : 6.3kg The kit includes a handy water proof storage bag

**LVCUNIKO** UNIKO 6 in 1 complete with waterproof storage bag



**1. LEVELLING**  
The vehicle can be levelled on 3 different heights (4.5 - 9 - 13 cm) without straining the shock absorbers. The large anti-slip plates (25x25cm) improve stability and comfort on board.



**2. WHEEL CHOCK**  
Securing wheels for long term parking and when parked on slopes.



**3. GRIP**  
Extended into a track the serrated surface provides grip enabling the vehicle to pull away on slippery ground i.e. wet grass, sand, snow and mud. Thanks to its flexible design shape Uniko 6in1 adapts itself to any surface



**4. MOUNTING RAMP**  
As mounting ramp (on 3 adjustable heights) it allows you to go up steps or pass from one level to another easily and without shocks.

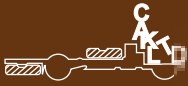


**5. UNIVERSAL STEP**  
When closed it can be used as a solid and reliable step.



**6. PRACTICAL STOOL**  
At least it becomes a practical stool for any emergency

WE NOW OFFER INSTALLATION SERVICE IN KENILWORTH BY [SupremeTech.co.uk](http://SupremeTech.co.uk)



# MANUAL & ELECTRIC ENTRANCE STEPS



Entrance Steps

## ENTRANCE STEPS MANUAL & ELECTRIC

All our steps are made with quality galvanised steel construction for strength and long reliability. The steps are mostly produced with anodised aluminium ribbed anti slip treads with rounded edge and end caps. The Step range fully complies with the EN1646 European standards and has been subject to stringent testing. All steps have a built in safety switch to provide a step open warning when wired to a warning light (not supplied) use CBE MCB on page 88. All electric steps come with remote open/close wall switch with pre wired harness to enable trouble free operation and easier installation with just a few wires to connect. The steps have dual safety switches built into the steps. Steps are universal and are easily DIY adapted to fit most vehicles. They are not designed as a lift. All electric models 12 Volt DC only

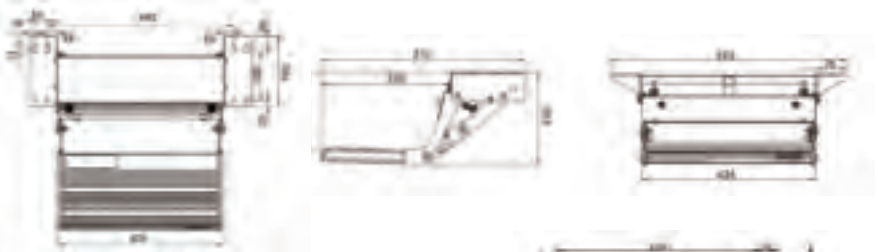
## RV Wrap Around Step Rug

Adjusts to fit almost any RV step. Just wrap around your existing RV step and hook springs into the holes that fit your step. No screws, glue or tools needed. Helps to keep your RV clean by cutting down on tracked-in dirt. For manual or electric RV steps.



ETSMATT GREY WRAP AROUND STEP RUG

MS1247344 Manual single step 436mm (5.8KG)



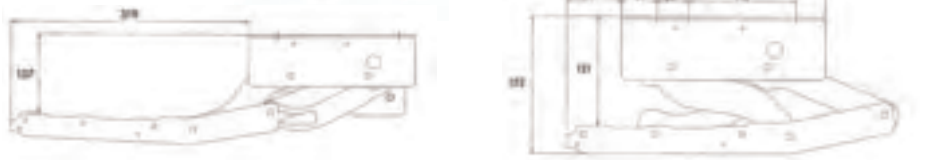
MS1247450 Manual single step 492mm (6.0KG)



ES1085644 Electric cassette step 440MM (13.7KG)



ES10751501 Electric slim step 500MM (9.1KG)



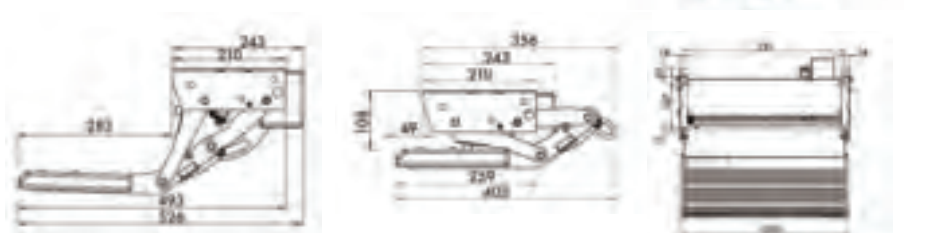
ES1075155 Electric step 550MM (9.1KG)



ES1075044 Electric single step standard



ES1075055 Electric single step wide



WE NOW OFFER INSTALLATION AND REPAIR SERVICE BY [SupremeTech.co.uk](http://SupremeTech.co.uk)



0844 414 2324



0844 414 2425